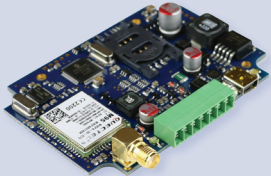


IPCOM



- PSTN output, Remote programming via IP network
- Reporting to two monitoring stations through IP/PSTN
- AES 128 encryption, Replacing object identifier
- Remote programming via fix IP
- IP transmission protocols: Enigma, SIA-DC09, Contact ID

COM-G



- 2 contact driven input
- Sending SMS and Email about the alarm center state
- Reporting to two monitoring stations via GSM/GPRS/HSPA
- Replacing object identifier, Encrypted communication (AES 128)
- Remote programming by SMS
- Transmission protocols: Enigma, SIA-DC09, Contact ID

IPCOM-G / 4G



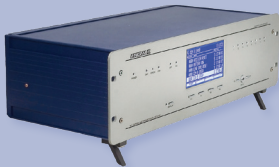
- SMS or Email Sending about the alarm center state
- Unique zone names until 16 zones
- Replacing object identifier, Encrypted communication (AES 128)
- Remote programming through IP network
- IP transmission protocols: Enigma, SIA-DC09
- Buffer memory with 64 events
- Input/Output expansion possibility

IPCOM PRO FIRE G / 4G



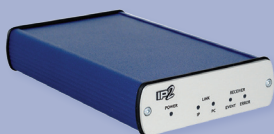
- Alloy housing, Fire certification
- 4 different operation mode
- Reporting to two monitoring stations through IP/GPRS/HSPA
- Sending internal Contact ID messages to the monitoring station
- Debug mode, lifetest sending

ENIGMA II



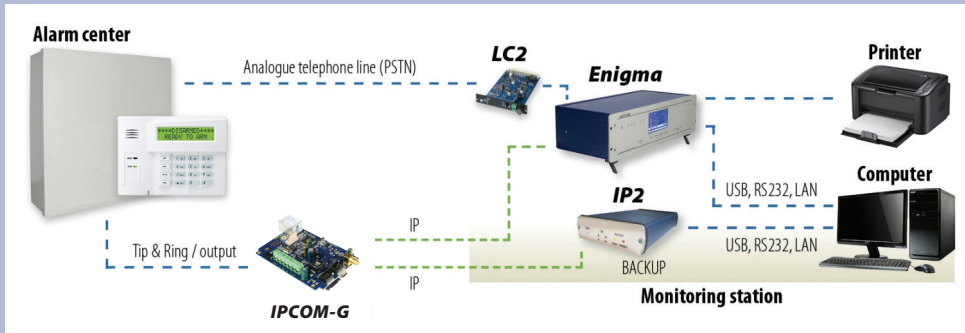
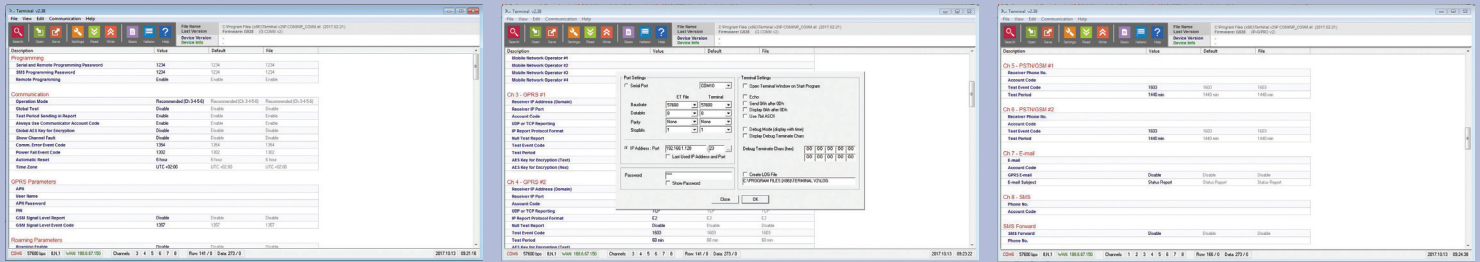
- Built in IP card in base configuration (expandable)
- 2 serial ports / USB connectors for PC connection
- 8 telephone line card connectors (optional)
- Receiving 4/2, Contact ID and SIA format tel. messages
- Receiving SIA DC-09, Enigma (E2) IP protocol messages
- Encrypted communication (AES-128)
- Event list monitoring from web browser

ENIGMA IP2



- Powered from USB in case of power failure
- Receiving SIA DC-09, Enigma (E2) IP protocol messages
- Encrypted communication (AES-128)
- IP monitoring for up to 2.500 accounts
- Account identification also by IP Address/MAC/IMEI
- Remote programming (through IP network)
- Card version can be built into Enigma II base unit

Terminal programming software



Terminal programming software

For the overall programming of the IP/GSM/GPRS modules you can use the terminal software. It provides simple and easy programming. The IP modules can be connected to the PC by LAN as well as USB. The software provides an advanced and a basic surface which promotes the programming process.

	IPCOM	IPCOM-G	IPCOM-4G	COM-G	IPCOM PRO FIRE G	IPCOM PRO FIRE 4G
I/O ports (+ expansion module)	2+16	2+16	2+16	2	2+16	2+16
User phone numbers for notification receiving	✗	1	1	1	1	1
Message sending to two monitoring receivers	✓	✓	✓	✓	✓	✓
Communication channels	IP/PSTN	IP/GPRS	IP/GPRS/HSPA+/UMTS/LTE	GPRS/GSM	IP/GPRS	IP/GPRS/HSPA+/UMTS/LTE
Lifestest sending	✓	✓	✓	✓	✓	✓
Phone line simulating	✗	✓	✓	✓	✓	✓
PSTN line monitoring	✓	✗	✗	✗	✗	✗
Ethernet connection possibility	✓	✓	✓	✗	✓	✓
Programming manner	USB/IP	USB/IP/SMS	USB/IP/SMS	USB/SMS	USB/IP/SMS	USB/IP/SMS
Current consumption (standby/operating)	80mA/160mA	80mA/600mA	80mA/600mA	80mA/500mA	80mA/1,5A	80mA/1,5A
Power Supply	10,5 V - 15,5 DC	10,5VDC 28VDC	10,5VDC 28VDC	10,5VDC 28VDC	10,5VDC 28VDC	10,5VDC 28VDC
IP protocol	SIA DC09/Normal CID/Enigma E2	SIA DC09/Normal CID/Enigma E2	SIA DC09/Normal CID/Enigma E2	SIA DC09/Normal CID/Enigma E2	SIA DC09/Normal CID/Enigma E2	SIA DC09/Normal CID/Enigma E2
AES 128 Encryption	✓	✓	✓	✓	✓	✓
E-mail report	✓	✓	✓	✓	✓	✓
Replacing customer ID of the alarm center	✓	✓	✓	✓	✓	✓

ACCESSORIES

PROGRAMMING



EXPANSION MODULE



POWER SUPPLY



ANTENNAS

