



InterCom GSM Kit

GSM DOORPHONE for 1,2 and 4 apartments
emergency call unit



INSTALLATION AND USER GUIDE

[Table of contents](#)

Device description and function 3

Module buildup..... 4

Figure 1: Structure of the device..... 4

Figure 4: SIM card insertion..... 4

Installation guide 5

LED signals..... 6

Connecting the module (PC) 6

Establishing connection using a Bluetooth adapter 7

Programming using the PC software 7

Connecting process..... 8

Checking module status..... 9

Switching off PIN code request on SIM card 10

Event Log Readout..... 10

Saving controlling phone numbers 11

Adjusting outputs..... 11

Power supply monitoring setup 12

Life signal sending setup 13

SMS command examples 16

Device description and function

The GSM device can be used as a stand-alone door phone in 1, 2 and 4 metal push-button designs (1, 2 and 4 apartments) and also as a gate control unit. With its use, the construction of a complete intercom system can be avoided, since the role of the indoor unit is taken over by mobile phones.

The InterCom GSM Kit Emergency – a one-of-a-kind communication solution with a vivid red exterior and the bold "FIRE" label. The wall-mounted unit is specifically designed for easy recognition during emergencies, with its striking appearance symbolizing urgency and danger. Currently, the unit is available in red with the "Fire" label, but customization options for colour and label are readily available as well. Experience peace of mind knowing you have a reliable and visually distinctive emergency communication system at your disposal.

One main phone number and 1-1 reserve phone number can be given at each flat. In case the main phone number is not answering, the module initiates a call to the second reserve phone number. The ring time can be modified.



Between the module and the mobile phone a voice call will be taken place, which involves call charges. Therefore, it is worth to take the package of the SIM card which is in the phone into account in order to charge the owner of the SIM card the least costs. Moreover, you can determine the maximum time of the call, thus, you can avoid the further costs that are caused by long talks.

After answering the call, a two-sided communication will be taken place between the person who is at the gate and who uses the mobile phone. The GSM module allows controlling the two output separately during the voice call, hence, the gate can be opened remotely without breaking the call.

The module is equipped with two relay outputs (the first is NO/NC, the second is NO), which can be activated during voice call with the 4. and 6. button of the phone. The outputs can be applied in monostable or bistable mode as well.

The output control is possible with free call from unlimited number. In case of caller identification, we can store up to 1000 numbers in the inner memory of the module. Also we can save numbers to the SIM card, which can be 250/500 numbers depending on the type of the SIM card. By caller identification the unauthorized controlling can be forbidden.

The device allows to use a night shift mode (The setting is updated every day at 0.00 A.M. according to the GSM time of the module). It means that we can set a time interval, in between the module will not initiate a call. In this mode, the outputs can be managed by incoming call.

The module can store up to 16,000 events in which the states of the inputs and outputs, power supply resets, GSM network and module state related information, incoming and outgoing calls and SMSs are saved.

The tamper input on the module can be used as a sabotage indicator with setting possibilities alike to inputs. Shortening it before powering on then cut short in 3 seconds functions as a "reset" that can revert the module back to its original factory state. (The unit does not include an internal tamper switch!)

Besides continuous voltage monitoring the module observes also the GSM strength. These data can be readout and these can be charted even by hourly divisions by the programming and surveillance software.

The module can be programmed by SMS command, voice menu, PC or by Android mobile phone.

* In the case of a locally available WIFI network, the module settings can also be set with cloud access by using the WiFi/BT Programmer add-on. For more information, visit our website www.ascglobal.hu



Figure 1: Device operation

Module buildup

Figure 1: Structure of the device

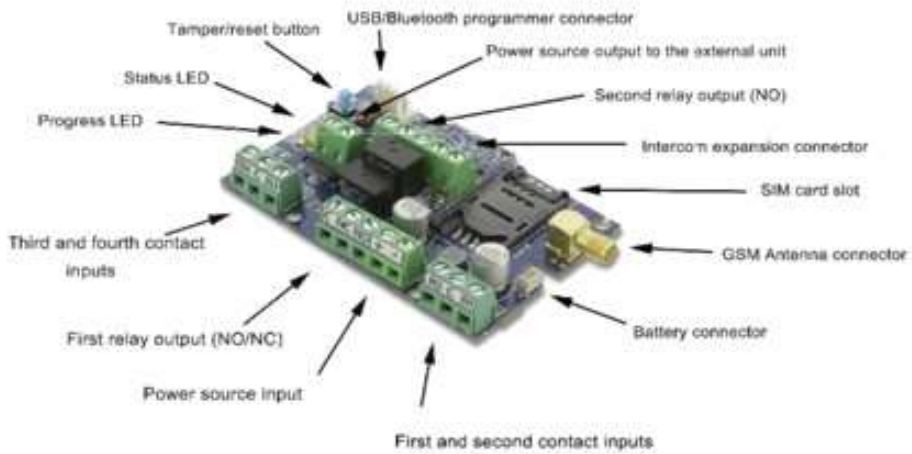


Figure 2: the buildup of the module

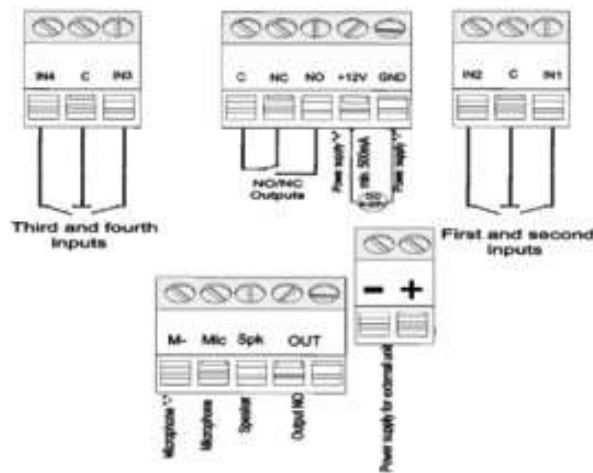
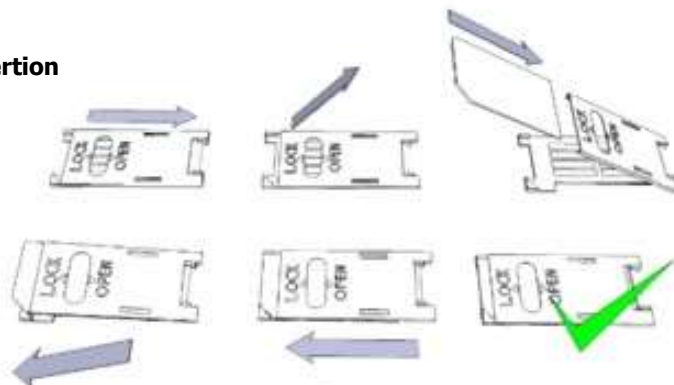


Figure 3: wiring diagram

Figure 4: SIM card insertion



Installation guide

Technical parameters

- Power voltage: 9-20 VDC
- Standby power drain: 100 mA
- Maximum power drain: 1A
- Relay output load: max. 20V / 500 mA
- GSM module type: SIMCOM 800
- GSM frequencies: GSM 850 / EGSM 900 / DCS 1800 / PCS 1900 (Multi- Band)
- SIM card usage: brand free GSM module
- GSM antenna type: SMA connector (comes with package)
It must be placed at least 1 meter from the device (DO NOT put it on or near the device!)
- Size (width x height x depth at the bottom / depth at the top)
 - 1 button: 90 x 174 x 45/71 mm
 - 2 button: 90 x 174 x 45/71 mm
 - 4 button: 90 x 199 x 45/71 mm
- Packing size (length x width x height): 205 x 128 x 32 mm
- Operation temperature: -20°C - +50°C

Installation steps

1. Carry out a signal strength check with your mobile phone. Sometimes occurs there is no sufficient signal strength at the commissioning site. In this case it is recommended to change the module position prior to installation. Do not install the device to places where strong electromagnetic waves might occur, ex. next to electric motors or alarm transformers.
2. Do not install in watery places or to places with great humidity.
3. Connect the antenna that can be secured with an SMA connector. If you are reading low signal strength use antenna with higher gain. Signal strength grow can also be achieved by repositioning the antenna. **Do not position the antenna under various metal covers as those might significantly ruin the signal strength.**
4. **You should opt out the PIN number request, voicemail and call notification of the SIM card.** Sometimes new SIM cards must be activated (usually one outgoing call has to be made). Check the validity of the card. If you have a prepaid card check its balance and its usage possibilities (ex. can be used only for calls).
5. Number identification of caller and at call initiations has to be checked. This function at certain service providers. Must be enabled formerly.
6. Insert the SIM card in the SIM card slot of the module.
7. Connectors have to be connected according to the wiring diagram. If you are dealing with OC output (output of EXP Alarm expansion panel) mind the correct wiring of the relay protecting diode.
8. If you are working with OC relay be cautious especially of avoiding electric shock. A proper contact protection must be established. If you lack the appropriate experience ask for professional help.
9. Check if the power supply performance will be sufficient for the module. Mind the polarity.
If wiring is reversed the module will not operate or might get damaged.
10. Now the device can be connected to the power supply.
11. If you have purchased also a battery connect it to the device. **Use only the appropriate battery for reserve powering the device!**
12. After connecting the voltage supply the red LED is lighted indicating the device establishing connection with the **GSM system (this can be 1 minute utmost).**
13. If red LED goes off and green LED flashes module is online and connected to network. The **flash number(s) indicates GSM signal strength.**

Power needed for programming can be supplied to the module also from USB adapter.

LED signals

Signals give essential information of the module, of GSM signal strength and the actual error codes. By blinking we mean flashes between two longer pauses.

- A STATUS LED (green) gives feedback of signal strength value based on the chart below:

Flashes	Signal quality
1	Bad
2	
3	Decent
4	Good
5	Excellent
LED lighted	GSM connection rejected

- An ACT LED (red) lit means the initiation process at startup. At this phase module performs the initial checks. During operation this reflects an event (SMS or voice call).
- If the red and green LED are lighted simultaneously it tries to communicate an error that can be identified with the chart below:

Flashes	Error code
1	Initializing
2	Bad GSM module
3	SIM card not inserted
4	SIM card locked with PIN code
10	Modem mode

- Alternating flashes of red and green LEDs means the "reset" function of the tamper input. This way the GSM module can be reverted back to its original factory settings.
- To leave modem mode, open the modem status window in the service menu in the ProRead or restart the module

The InterCom GSM Kit has LED nameplate lighting, the color of which can be changed in ProRead software. (see page 9)

Connecting the module (PC)

Establishing connection using a *USB adapter*

1. Connect the USB adapter to the *Program* labeled slot of the module.
2. USB adapters can provide the sufficient voltage for programming the GSM module.
3. Attach the USB connector of the adapter to a USB extension cable and plug into any USB port of a PC.
4. **WARNING! If you are using older Windows operating system** the system offers an automatic driver installation. IMPORTANT, do not use the offered driver but carry on the installation with the **USB driver**.

Installing the USB driver manually

- ✓ use the appropriate 32 or 64 bit version for your operating system in the installation process
- ✓ to check this use the Control Panel → System menu path
- ✓ connect the USB programmer to your PC
- ✓ do not chose the automatic installation offered by the system
- ✓ Open the path Control Panel → System → Hardware **Device Manager** window.

- ✓ In this window search for **Unknown device** (which will be the programmer now, later the **USB Serial port**). If you cannot find it start the "Scan for hardware changes" process from the upper window menu.
- ✓ Device properties can be achieved by double clicking on the unknown device.
- ✓ Start the Update driver process
- ✓ In the installation window choose the manual selection of the driver location then choose the appropriate folder containing the 32 or 64 bit driver
- ✓ Click on the Next button to start the installation.
- ✓ *Open the Device Manager (click on System → Properties → Hardware tab → Device manager)*
- ✓ Search for a device named USB Serial port (COM...) under Ports
- ✓ If a driver reinstall is needed click on the device then choose driver removal then follow instructions
- ✓ Start the programming software.
- ✓ You have to set the value in brackets [USB Serial port (COM...)] in the programming software
- ✓ Establish a connection to the GSM module.

Establishing connection using a Bluetooth adapter

1. Connect the Bluetooth adapter to the GSM module and provide power to it.
2. Switch on the Bluetooth connection possibility on your device (PC or Android mobile phone).
3. Search for programmer with the help of your Bluetooth enabled device.
4. After finding the adapter you can pair your PC/smart phone with the adapter using the code "1234".
- 5. Search for the COM port number of the connection (usually under Properties → Hardware tab)**
6. Search for the COM port number of the connection (usually under Properties → Hardware tab)
7. Set the port number also in your programming software (PC) or choose the automatic port finding option.
8. Establish a connection to the GSM module.

If you use Windows 8 operating system the programming software should be started in "Windows XP SP2/SP3" compatibility mode (Right click on the starting icon of the program → Properties → Compatibility)

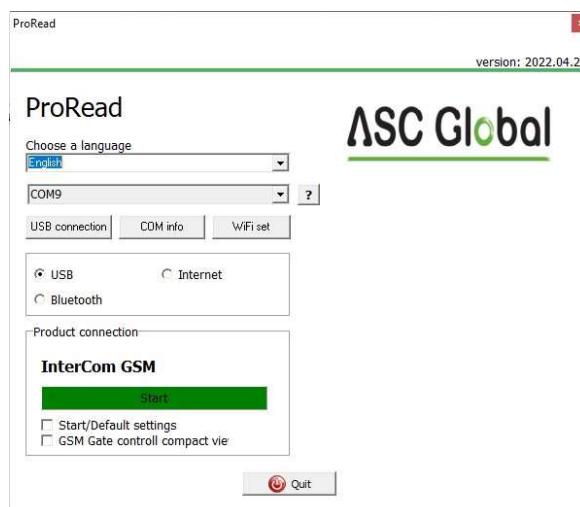
In every case you can check the connection if you see the connected module name next to the Start button in the programming software and the green LED on the programmer starts to flash.

If you have a connection established between the adapter and your PC or mobile phone you can start the module configuration.

- By clicking the Start button after the connection was established modules settings will be acquired.
- By clicking the Start/Default config button (after a confirmation) it will revert back the module to factory settings.
- Using the Android application settings are always acquired after establishing a connection.

Programming using the PC software

- If you have chosen configuration by PC you can use software that is freely downloadable from our website
- The program runs automatically, no installation
- Compatible with operating systems Windows 7, 8
- Make sure you always use the latest software!
- If newer software is out the module should be prior to the first configuration.

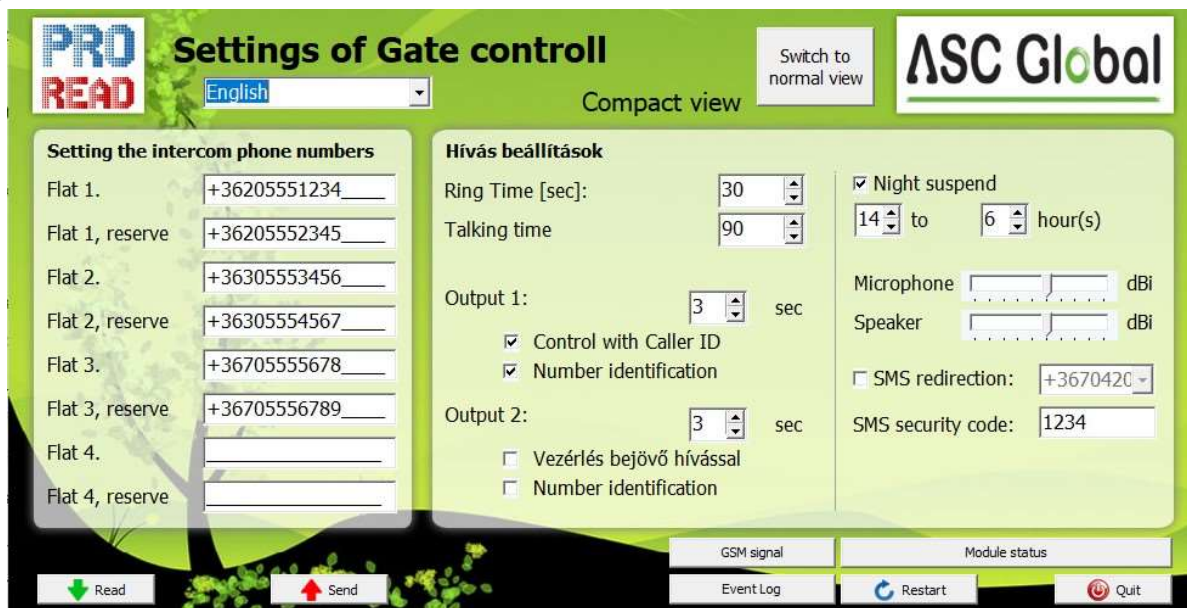


our
needed
and 10
updated

Connecting process

- To program the module choose between USB or Bluetooth connection.
- Below the language selection in the scroll down list (COM 4 in the picture) you can select the port through which you would like to communicate with the module programmer. You can find this value (in Windows operating system) under Device manager → Com port at the connected programmer. If you cannot decide you might let the program to search for it by pressing the **automatic COM port finding**. The automatic COM port search might take several minutes.
- If the connection was successful you will see under the Product connection tab the name of the module.
- Clicking the **start** button the software connects to the module and reads out its settings.
- By clicking the **Start/Default config** button the module will be set back to default factory settings after the connection was established. (Before the operation the software asks for confirmation if this feature has not been switched off before).
- If you do not want to attach a module just to inspect the settings options you can select the **Products-tryout** window where you can freely make a specific module properties selection and also module preprogramming.

Compact view



The most important settings, which are necessary for the programming, are summarized on the compact view. By clicking on the switch to **normal view** button we can return to the original programming surface.

On the compact view the following data can be given:

Setting the intercom phone numbers

Flat 1.	+36301111555
Flat 1, reserve	+36205555111
Flat 2.	+36201111222
Flat 2, reserve	+36701111117
Flat 3.	
Flat 3, reserve	
Flat 4.	
Flat 4, reserve	

- Here you can give the phone numbers to which you would like to send SMS or voice call. **The numbers here have to be in international form in order the stabile working!**
- (Ex.: +36201111155 or 0036201111133).
- You can give phone numbers to 4 flat (the buttons are linked to the inputs of the module that belongs to the certain flat)
- When the ring time expired, and the primary number did not answer the call, the reserve numbers will be phoned
- This list can be modified with SMS as well, with the „Telxxy=Phone number” command. Here the „xx” indicates the number of the flat, the „y” indicates that it is main (1) or reserve number (2) (Example: 1234TEL011=+36301234567, 1234TEL012=+36302222233) You can read more information about the SMS commands on Page 18.

The **ring time** determines how long the module is trying to reach the certain phone number. If the ring time expired and the called number does not answer the call, the module will phone the reserve number that belongs to the certain flat. We can determine how long the external unit can be after answering the call.

Hívás beállítások

Ring Time [sec]:

Talking time:

Output 1: sec

Control with Caller ID

Number identification

Output 2: sec

Control with Caller ID

Number identification

- By default the two outputs work in monostable mode.
- Here you can give the control time of the output. The maximum value is 65.000 seconds.
- We have the possibility to manage the outputs with or without caller identification.
- Without caller identification, anybody can activate the outputs who knows the phone number of the SIM card.
- In case of caller identification, the module rejects the initiating of the

control from numbers which are not in the control number list. This function contributes to the protecting of the device, which is connected to the output, from the unauthorized control.

- By switching on the **night suspend** mode, the GSM module can be turn off temporarily; hence, it does not initiate a call. The blocking will be applicated for all flats. For switching on the **night suspend mode**, restarting is required. (The setting is updated every day at 0:00 according to the clock setting of the GSM module!)

Night suspend

to hour(s)

- The gate or door can be managed during the night suspend time as well.

Microphone: dBi

Speaker: dBi

- By configuring the signal level of the microphone and the speaker, you can modify the speaker volume and the sensitivity of the microphone of the device which is connected to the InterCom GSM.

- Also, here you can modify the SMS security code. With this code, you can
 - configure the settings of the module after set up. (in case the certain configuration does not require direct connection to the device)
- You can choose a nameplate panel lighting color. (Off by default) White / Red / Green / Blue / Purple / Cyan / Yellow

SMS redirection:

SMS security code:

- At the bottom of the screen, you can read out the event log as well as the GSM signal strength. In addition, here you can checked the current state of the GSM module

GSM signal Module status

Event Log

Checking module status

Module status

ASC Global

Input 1.: OFF Output 1.: OFF Tamper: ON network power

Input 2.: OFF Output 2.: OFF Power supply: OFF

Input 3.: OFF Output 3.: OFF Arm/Disarm: OFF

Input 4.: OFF Output 4.: OFF

Error code/CID:

GSM Status:

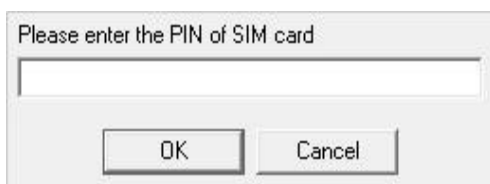
GSM Time:10:33 COM OK

You can reach the actual status through **Maintenance** → **Show module status** button

By the module status query you will be informed of the followings:

- input statuses
- output statuses
- Tamper sabotage notification
- power supply failure notification
- armed/disarmed module status
- displaying occurring error/event codes (ex.: no SIM card inserted, SIM card locked by PIN code)
- checking Contact ID code (to monitoring station) sending process (ex. handshake status)
- GSM connection status (ex. connected to the network, roaming, no connection, connection rejected)
- actual GSM signal strength (refreshing in seconds)

Switching off PIN code request on SIM card



Before inserting SIM card in the module the **PIN code request should be switched off**

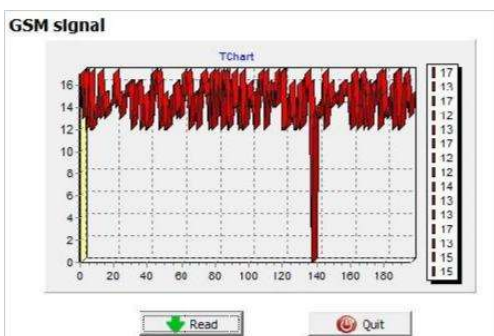
- If you have not done yet then you can switch off at
 - **Maintenance** → **Switch off PIN code request**.
- You will see the following window, where you can input the code and its request will be switched off.

Event Log Readout

The event log can be viewed by clicking **Maintenance** → **Read Event Log** button:

- It can store up to 16,000 events in FILO (first in last out) mode
- The acquired list can be saved in "csv" file for later examination. This can be done also in the event list by clicking
 - the "Open csv" button.
- In the **Token** column there are short event information.
- In the **Date** column notification dates are stored. IMPORTANT! Date will be accurate if the clock of the module is synchronized with a PC or with GSM system. The latter is automatically done by the module when connected to the network of the operator.

EVENT	DATE	GSM 0-31	GSM Network	Note / parameters	
1	GSM logged	2022.09.09. 10:25:16	31	Connected	IMEI:868259020150648 SW:09.2.0
2	Microcontroller START REI	2011.01.01. 00:00:04	0	Not connected	
3	GSM logged	2022.09.09. 14:51:56	31	Connected	IMEI:868259020150648 SW:09.2.0
4	Microcontroller START REI	2011.01.01. 00:00:04	0	Not connected	
5	Microcontroller START REI	2011.01.01. 00:00:04	0	Not connected	
6	Microcontroller START REI	2011.01.01. 00:00:04	0	Not connected	
7	Microcontroller START REI	2011.01.01. 00:00:04	0	Not connected	
8	Microcontroller START REI	2011.01.01. 00:00:04	0	Not connected	
9	Microcontroller START REI	2011.01.01. 00:00:04	0	Not connected	
10	Microcontroller START REI	2011.01.01. 00:00:04	0	Not connected	
11	Microcontroller START REI	2011.01.01. 00:00:04	0	Not connected	
12	Microcontroller START REI	2011.01.01. 00:00:04	0	Not connected	
13	Microcontroller START REI	2011.01.01. 00:00:04	0	Not connected	
14	Microcontroller START REI	2011.01.01. 00:00:04	0	Not connected	
15	Microcontroller START REI	2011.01.01. 00:00:04	0	Not connected	
16	Microcontroller START REI	2011.01.01. 00:00:04	0	Not connected	
17	Microcontroller START REI	2011.01.01. 00:00:04	0	Not connected	
18	Microcontroller START REI	2011.01.01. 00:00:04	0	Not connected	
19	Microcontroller START REI	2011.01.01. 00:00:04	0	Not connected	
20	Microcontroller START REI	2011.01.01. 00:00:04	0	Not connected	
21	Microcontroller START REI	2011.01.01. 00:00:04	0	Not connected	
22	Microcontroller START REI	2011.01.01. 00:00:04	0	Not connected	
23	Microcontroller START REI	2011.01.01. 00:00:04	0	Not connected	
24	GSM logged	2022.08.31. 16:04:20	30	Connected	IMEI:868259020150648 SW:09.2.0
25	Microcontroller START REI	2011.01.01. 00:00:04	0	Not connected	
26	OUT1	2022.08.31. 14:53:37	31	Connected	Off
27	OUT1	2022.08.31. 14:53:53	31	Connected	On
28	Incoming calls identified	2022.08.31. 14:53:52	31	Connected	+36704204008
29	GSM logged	2022.08.31. 14:53:31	31	Connected	IMEI:868259020150648 SW:09.2.0
30	Microcontroller START REI	2011.01.01. 00:00:04	0	Not connected	
31	OUT1	2022.08.31. 14:52:41	31	Connected	Off
32	OUT1	2022.08.31. 14:52:37	31	Connected	On
33	Incoming calls identified	2022.08.31. 14:52:36	31	Connected	+36704204008
34	Input 4.	2022.08.31. 14:52:28	31	Connected	Restore



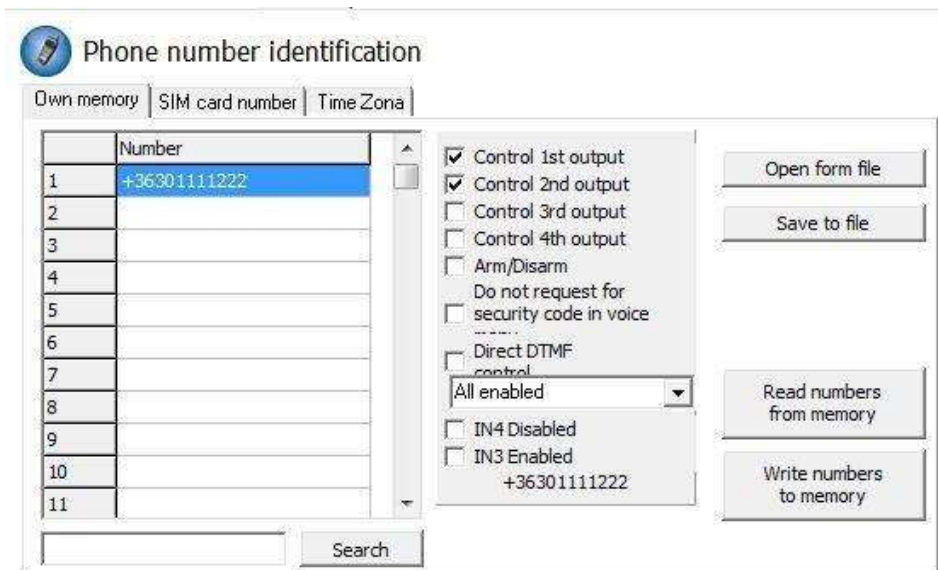
- The **GSM 0-31** indicates the signal strength at the time of creation. 31 is the highest, 0 indicates state with no connection.
- Network indicates if the module was connected to the network carrier at the time of creation.
- In the **Comment/parameter** column notification related extra information are stored.
- Initially the chart is empty; the readout can be commenced by pressing the **Readout event log** button.
- The newest data will appear at the top of the list followed by

- older entries as you go down the chart.
- If the whole chart readout is not necessary you can stop it with the **Readout stop** button.

Read out list can be exported from the software in "csv" (ex. Excel) chart so later it can easily be sent and stored.

Saving controlling phone numbers

- At the control phone numbers section you can set telephone numbers that can control the outputs.
- Phone numbers can be stored in the memory of the module (maximum 1,000 pcs). Moreover, additional phone numbers can be stored in the SIM card.
- By using inner memory, the module will be independent from the SIM card memory.
- Always read out the memory before editing the list with the **Readout numbers from memory** button. For saving use the **Save numbers to memory** button.

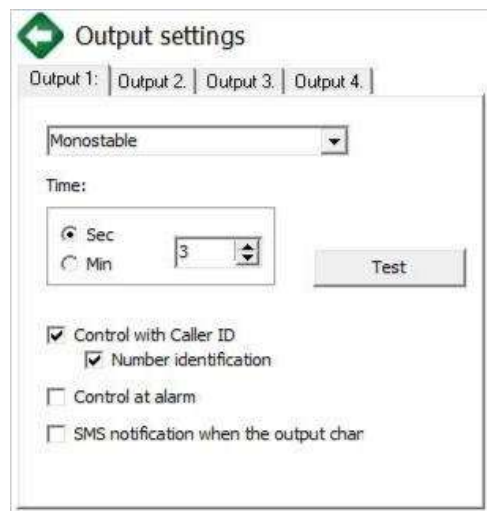


- **Stored numbers must be in international format.** Due to number length using "+" is suggested (ex.: +36301234567)
- Storing, editing and opening of numbers are also possible (from .csv file).Controlling numbers can be associated with specific outputs.
- The list can be modified also by **SMS command** with **ADD=phone number** (addition) and **DEL=phone number** (removal) commands (Example: 1234ADD=+36301234567, 1234DEL=+36301234567)
- You can find additional information on **SMS commands** on page 20

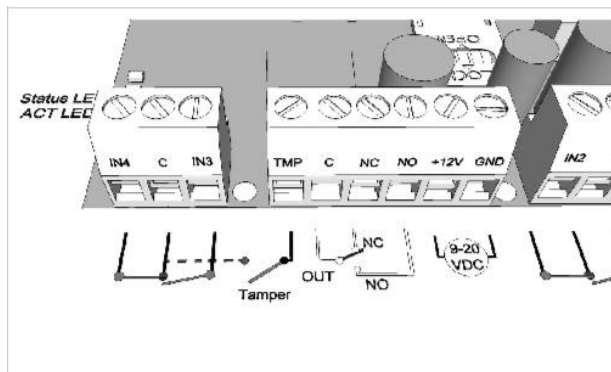
Adjusting outputs

On the **Output** window the output settings can be changed. The output type can be **monostable** namely one stasured, (switches for the given period than reverts back to the original status), or **bistable** namely two stasured (it only will revert back to original state after a new controlling).

- Regarding monostable operation switch time can be set in seconds or minutes. This can be max 65,000 seconds.
- The **Unsuccessful SMS** means output will be controlled when network operator rejects an SMS sending.
- Choosing **GSM fault** output will be controlled as long as GSM network reverts to its normal state
- Regarding output controlling it can be set if you want to control with incoming call or it should be activated by an alarm event



Tamper settings



The GSM module facilitates the connection of a tamper protection. Essential of this protection is that module will trigger an alarm if GSM case is removed.

- Its connector is next to the first output shared connector of the main panel. Connector usage is similar to input: only suitable for monitoring short or open circuit. Connector must be connected according to the wiring diagram. You can use any shared input terminal. DO NOT USE SHARED OUTPUT TERMINAL (C).

Connect the Tamper (TMP) connection point with the Common (C) point of the inputs

Tamper connector settings do not differ from any other input settings. On demand connector can be used as a 5th input.

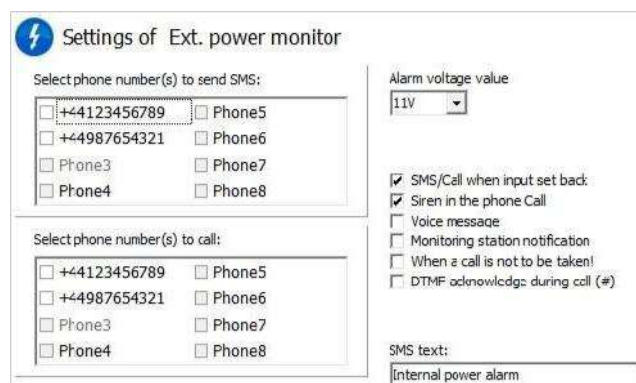
If you are using tamper for monitoring case removal input type should be set as closed by default. Shortening the terminal before powering on than releasing in 3 seconds will revert the GSM module back to its factory settings. This progress is indicated by the alternate flashes of the ACT and STATUS LEDs.



Power supply monitoring setup

The GSM device is able to monitor its power source and send notification of its problems

- On the **Power monitor** tab the trigger voltage level
- can be set. Below this the module sends an alert. Our Pro series modules have battery connectors that
- can be used to connect the Pro Battery.
- IMPORTANT! Modules without auxiliary power
- supply will switch off if there is no main power supply.
- The remaining function settings equals with the input settings.



Life signal sending setup

By life sign sending the user can be sure about the flawless operation of the system.

The life sign sending periods and also exact hour can be set for notification. **To use this feature *Send life sign check has to be selected!***

It is also important the day of the first signal can be scheduled not to arrive on the setup day. The life sign activation day can be set.

You can modify life sign sending with the following SMS command: 1234LIFETEST=ccssttttttt

ccc → sending cycles/days (ex.: 007 days)

ss → hour of sending on a day

ttttttt → which telephone number will be notified (ex.: 00100000 → it will send the message to the 3rd phone number)

Programming with SMS commands

Module can also be programmed by SMS commands. SMS starts always with the security code that can be modified whenever you want. Commands can be piled but the SMS length must be under 160 characters.

The module (if it is possible) will send reply SMS after every message. You can switch this off with **NO SMS** command or with the **RECALL** command when the module makes a call to confirm the successful programming. Command criteria:

- can not contain accented characters
- command characters are capitals
- commands have to be separated with space
- besides = you can also use #.
- messages have to start with security code that is followed by first command without space
- SMS text command has to end with # character

Life signal settings

Life signal sending

7 Day(s)

12 At ... o clock

0 First, after ... day(s)

Select phone number(s) to send Life signal messages

+44123456789 Phone5

+44987654321 Phone6

Phone3 Phone7

Phone4 Phone8

Test

SMS text:
Life signal, system OK...

Voice call to the 1st phone number

Description	SMS command	x value	value after = sign	Example
editing SMS security code	CODE		= new security code	1234CODE=4321
adjust clock	CLOCK		= yymmddhhmm yy: year, mm: month dd: day, hh: hour mm: minute	1234CLOCK=1401200922 Date will be: 2014.01.20 09:22
save telephone number for caller identification	ADD		= telephone number (with +36)	1234ADD=+36305551234
removing telephone number from caller number identification list	DEL		= telephone number (with +36)	1234DEL=+36305551234
saving/editing telephone number for notification	TEL	x x y xx: main phone number of the flat Y: reserved phone number	= telephone number (with +36)	1234TEL011=+36305551234
input setup	INPUT	x input ordinal number	= tnnneeeeeee t:0 → switched off, 1→24 h normal, 2→ backup; 3→ normal alarm 4→ delayed alarm nn→ NO or NC eeeeee.: Other parameters: 1.e=1→ send SMS of status reversion 2.e=0→ compulsory 0 3.e=1→siren sound 4.e=1→voice message 5.e=1→remote surveillance 6.e=1→ no need to pickup when calling 7. e=1→DTMF confirmation (#) 8. e=0→ compulsory 0	1234INPUT1=INC00100000 First input is: -24 h normal -Normal Close - not sending SMS when reverts back to initial state - plays siren sound when calling - no voice message - no remote surveillance notification - when calling must be picked up -no need for DTMF confirmation
Output setting	OUTCONF	x output serial	= iiiirhn iiii→if 00000 then it will be bistable, otherwise it is the duration of control in seconds r→ controlled when alarm h→controlled when call n→=1→ without caller	1234OUTCONF=00003110 output is in 3 seconds monostable mode, it can be controlled by call and alarm and number identification is a must during a call

				4 th etc.)	
Setting up notification sending	SEND	x	1:1 st input 2.: 2 nd input 3.: 3 rd input 4.: 4 th input 9.: tamper 10.: power source monitor 12.: life sign	= sssssssv vvvvvv sssssss→ selecting phone numbers for SMS notification (0 or 1) vvvvvv→selecting phone numbers for call (0 or 1)	1234SEND2=0010000011110000
	SMSTEXT	x	1.: 1 st input 2.: 2 nd input 3.: 3 rd input 4.: 4 th input 9.: tamper 10.: power source monitor 12. :life sign 16.: reverting text	= SMS text ending with *. Text must not contain accented character!	1234SMSTEXT1= alarm text*
Forwarding inbound SMSs	REDIR			= phone number serial from 1 to 8	1234REDIR=2
Setting ringing time	RINGTIME			= from 001 to 255 (in seconds)	1234RINGTIME=030 rings for 30 seconds
Maximum time of speaking	CALLTIME			= Maximum time of speaking in seconds.	1234CALLTIME=30
Setting of the microphone signal level	GAINMIC			= 0..9 (0 - Disabled)	1234GAINMIC=3
Setting of the speaker signal level	GAINSPK			= 0..9 (0 – Disabled)	1234GAINSPK=5
Night suspend mode	NIGHTDIS			OFF: function blocked aa: the beginning of the blocking in hour bb: the end of the blocking in hour	1234NIGHTDIS=23,06
Requesting module status information	INFO			Command	1234INFO
no SMS after SMS programming	NOSMS			Command	1234command1 command 2 ... NO SMS
output control	OUT	x	output numbers	= ON→switch on OFF→switch off RUN→controlling according to settings ssss→ controls the output for	1234OUT1=ON Output 1 switches on 1234OUT2=OFF Output2 switches off 1234OUT3=RUN

			a limited time (in seconds)	Controlling output 3 1234OUT4=00003 Output 3 switches on for 3 seconds
Life sign sending	LIFETEST		cccssttttttt ccc→cycle time, how often to send message (ex: 030 days) ss→on the given day at what time (ex: at 12 o'clock) ttttttt→which telephone number to choose from the 8 ex: 00100000→3 rd phone number, 01010000→2 nd	1234LIFETEST=00711001001007 -in 7 days -at 11 a.m. -sending to 3 rd and 6 th telephone number
Restarting module	RESTART	Command		1234RESTART

SMS command examples

1st message: input setup and selecting 3rd telephone number for notification. Sending SMS and voice message to the 3rd number.

5384TEL3=+36201255335 CLOCK=1401200922 INPUT2=4NO00100000

SEND2=0010000000100000 SMS text is the following:

5348 → SMS security code, every new SMS can be started with this code (to change it use the CODE command. Default code: 1234)

TEL3=→changing 3rd telephone number for notification. Give the number in international format.

CLOCK= change the date to the following: 2014.01.20 09:22

INPUT2=→ setting 2nd input to the following: delayed normal open input that sends siren alarm when there is an event. **SEND2=**→second input sends SMS and voice message to the 3rd telephone number

2nd message:

- to modify the SMS text of the second input
- output and life sign message setup and
- saving an output controlling number for controlling
- finally modify the SMS security code

5384=SMSTEXT2=second input alarm" OUTCONF1=00003010 ADD=+36705553456

LIFETEST=007123000100000 CODE=2345

SMSTEXT2=→modify SMS text of second input. No accented characters!

OUTCONF1=→ output setup: monostable for 3 seconds with caller identification

ADD=→Adding telephone number to caller identification

LIFETEST=→sending life sign weekly at 12:30 to the 3rd telephone number